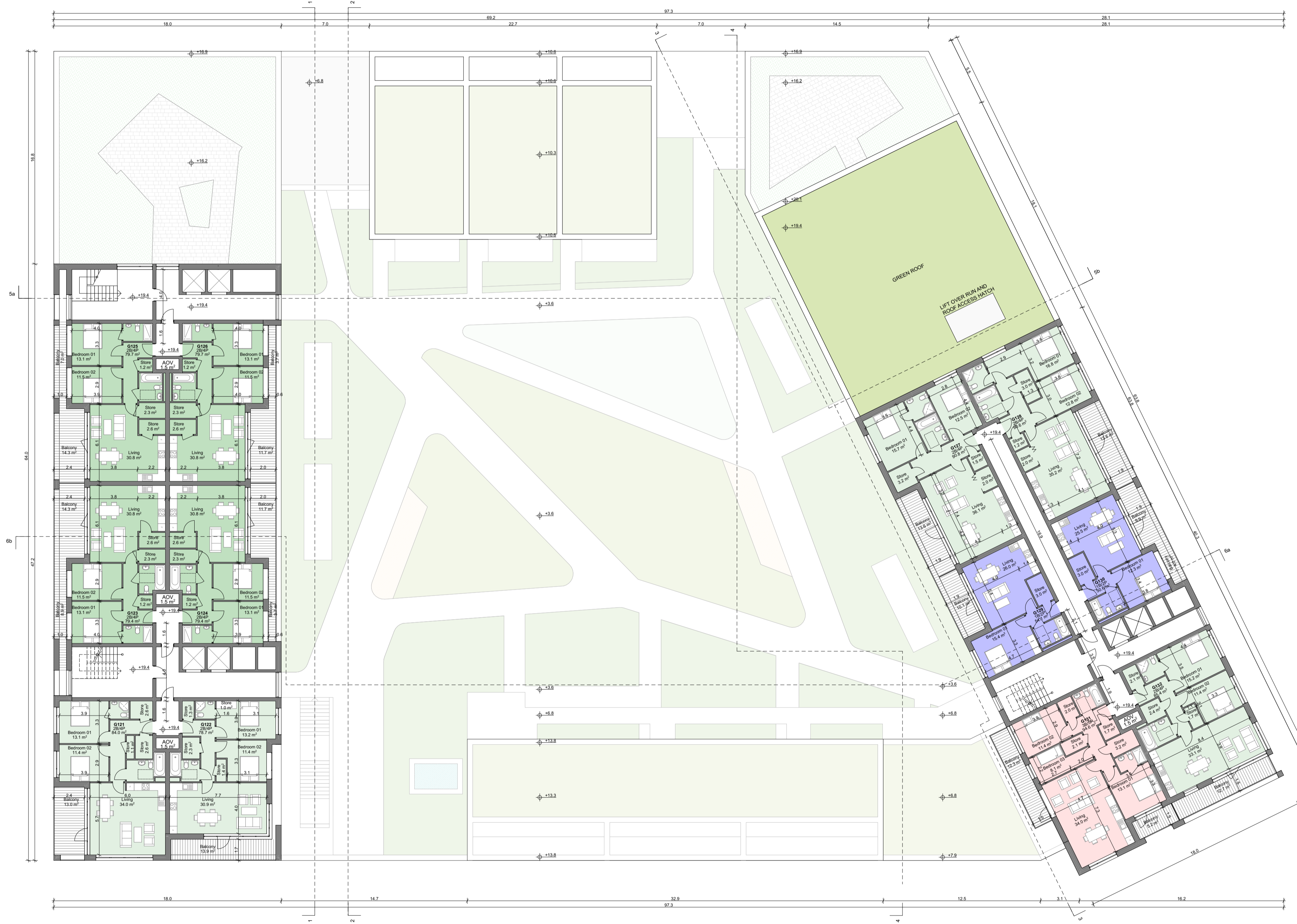


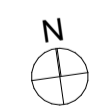
**Keyplan**  
NTS

- 1 Bed Apartment  
Dual Aspect
- 1 Bed Apartment  
Single Aspect
- 2 Bed Apartment  
Dual Aspect
- 2 Bed Apartment  
Single Aspect
- 3 Bed Apartment  
Dual Aspect
- 3 Bed Apartment  
Single Aspect



SCHEDULE OF ACCOMMODATION			SCHEDULE OF ACCOMMODATION		
APT. NO.	APT. TYPE	APT. AREA	APT. NO.	APT. TYPE	APT. AREA
G001	2B/4P	82.82	G111	2B/4P	79.67
G002	2B/4P	79.67	G112	2B/4P	79.67
G003	2B/4P	79.67	G113	2B/4P	80.09
G004	1B/2P	55.93	G114	2B/4P	80.10
G005	2B/4P	85.00	G115	2B/4P	85.55
G006	1B/2P	49.98	G116	2B/4P	91.59
G007	1B/2P	49.98	G117	1B/2P	58.21
G008	2B/4P	86.56	G118	1B/2P	54.70
G009	1B/2P	50.77	G119	3B/5P	94.62
G010	2B/4P	78.79	G120	2B/4P	85.43
G011	2B/4P	90.72	G121	2B/4P	84.04
G012	1B/2P	50.56	G122	2B/4P	78.66
G013	2B/4P	79.67	G123	2B/4P	79.39
G014	2B/4P	79.56	G124	2B/4P	79.39
G015	2B/4P	79.54	G125	2B/4P	79.67
G016	2B/4P	84.50	G126	2B/4P	79.67
G017	2B/4P	78.60	G127	2B/4P	80.79
G018	2B/4P	80.18	G128	2B/4P	90.61
G019	2B/4P	79.39	G129	1B/2P	54.09
G020	2B/4P	79.39	G130	1B/2P	50.59
G021	2B/4P	79.67	G131	3B/5P	94.62
G022	2B/4P	79.67	G132	2B/4P	85.43
G023	1B/2P	54.93	G133	2B/4P	84.04
G024	1B/2P	62.68	G134	2B/4P	78.66
G025	2B/4P	93.00	G135	2B/4P	79.39
G026	2B/4P	128.52	G136	2B/4P	79.39
G027	3B/5P	122.35	G137	2B/4P	90.79
G028	3B/5P	122.35	G138	2B/4P	90.61
G029	3B/5P	122.44	G139	1B/2P	54.09
G030	3B/5P	142.86	G140	1B/2P	50.59
G031	1B/2P	56.61	G141	3B/5P	94.62
G032	2B/4P	79.43	G142	2B/4P	85.43
G033	2B/4P	82.78	G143	2B/4P	84.04
G034	2B/4P	91.59	G144	2B/4P	78.66
G035	2B/4P	85.55	G145	2B/4P	79.39
G036	1B/2P	54.70	G146	2B/4P	79.39
G037	1B/2P	58.21	G147	1B/2P	54.09
G038	2B/4P	79.91	G148	1B/2P	50.59
G039	3B/5P	119.07	G149	3B/5P	94.62
G040	1B/2P	50.59	G150	2B/4P	85.43
G041	2B/4P	79.44	G151	1B/2P	54.09
G042	2B/4P	79.44	G152	1B/2P	50.59
G043	2B/4P	79.44	G153	2B/4P	85.43
G044	2B/4P	78.66	G154	3B/5P	94.62
G045	2B/4P	84.04			
G046	2B/4P	79.39			
G047	2B/4P	79.39			
G048	2B/4P	79.67			
G049	2B/4P	79.67			
G050	1B/2P	54.93			
G051	1B/2P	62.68			
G052	2B/4P	82.43			
G053	2B/4P	82.67			
G054	2B/4P	82.67			
G055	2B/4P	82.67			
G056	2B/4P	91.44			
G057	2B/4P	82.71			
G058	1B/2P	52.14			
G059	1B/2P	53.74			
G060	2B/4P	85.55			
G061	2B/4P	91.59			
G062	1B/2P	58.21			
G063	1B/2P	54.70			
G064	3B/5P	94.62			
G065	2B/4P	85.43			
G066	3B/5P	131.68			
G067	3B/5P	131.61			
G068	3B/5P	131.64			
G069	2B/4P	84.04			
G070	2B/4P	78.66			
G071	2B/4P	79.39			
G072	2B/4P	79.39			
G073	2B/4P	79.67			
G074	2B/4P	79.67			
G075	1B/2P	54.93			
G076	1B/2P	62.68			
G077	2B/4P	82.43			
G078	2B/4P	91.44			
G079	2B/4P	82.71			
G080	1B/2P	54.14			
G081	1B/2P	53.74			
G082	2B/4P	85.55			
G083	2B/4P	91.59			
G084	1B/2P	58.21			
G085	1B/2P	54.70			
G086	3B/5P	94.62			
G087	2B/4P	85.43			
G088	2B/4P	84.04			
G089	2B/4P	78.66			
G090	2B/4P	79.39			
G091	2B/4P	79.39			
G092	2B/4P	79.67			
G093	2B/4P	79.67			
G094	1B/2P	54.93			
G095	1B/2P	62.68			
G096	2B/4P	82.43			
G097	2B/4P	91.44			
G098	2B/4P	82.71			
G099	1B/2P	53.74			
G100	1B/2P	52.14			
G101	2B/4P	85.55			
G102	2B/4P	91.59			
G103	1B/2P	58.21			
G104	1B/2P	54.70			
G105	3B/5P	94.62			
G106	2B/4P	85.43			
G107	2B/4P	84.04			
G108	2B/4P	78.66			
G109	2B/4P	79.39			
G110	2B/4P	79.39			

Sixth Floor  
1:200



<b>TOTAL UNITS:</b>	154
1 Bedroom Apartments:	39 = 25%
2 Bedroom Apartments:	99 = 65%
3 Bedroom Apartments:	16 = 11%
<b>DUAL ASPECT:</b>	78 Units = 51%
Dual Aspect:	78 Units = 49%
<b>COMMUNAL AMENITY SPACE:</b>	
Outyard Communal Amenity Space:	1597 m <sup>2</sup>
Indoor:	82 m <sup>2</sup>
Roof Gardens:	470 m <sup>2</sup>
<b>TOTAL:</b>	2149 m <sup>2</sup>

**NOTE:**  
Refer to site plans and elevations for site specific FFLs above datum.