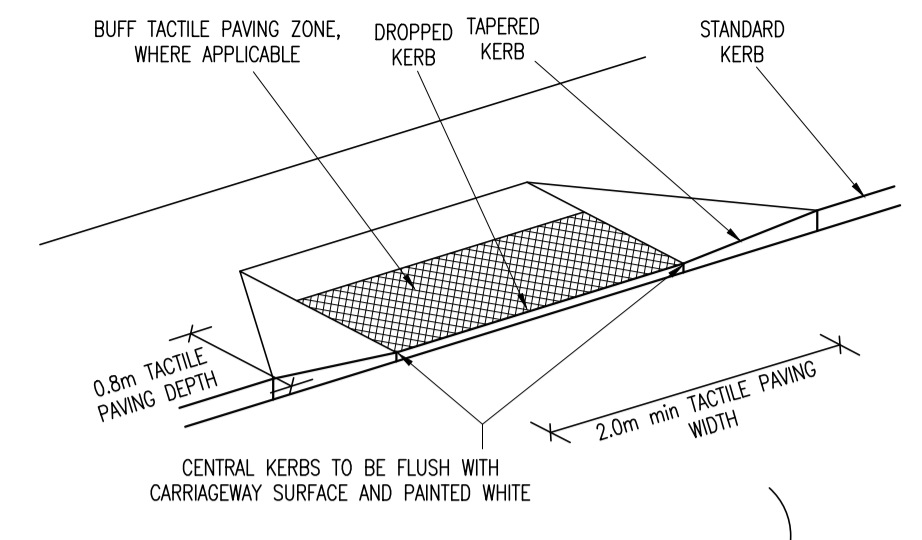
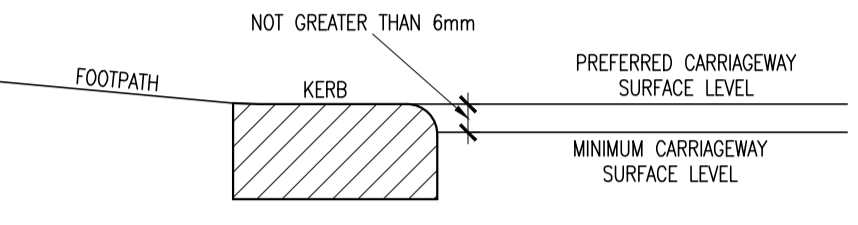


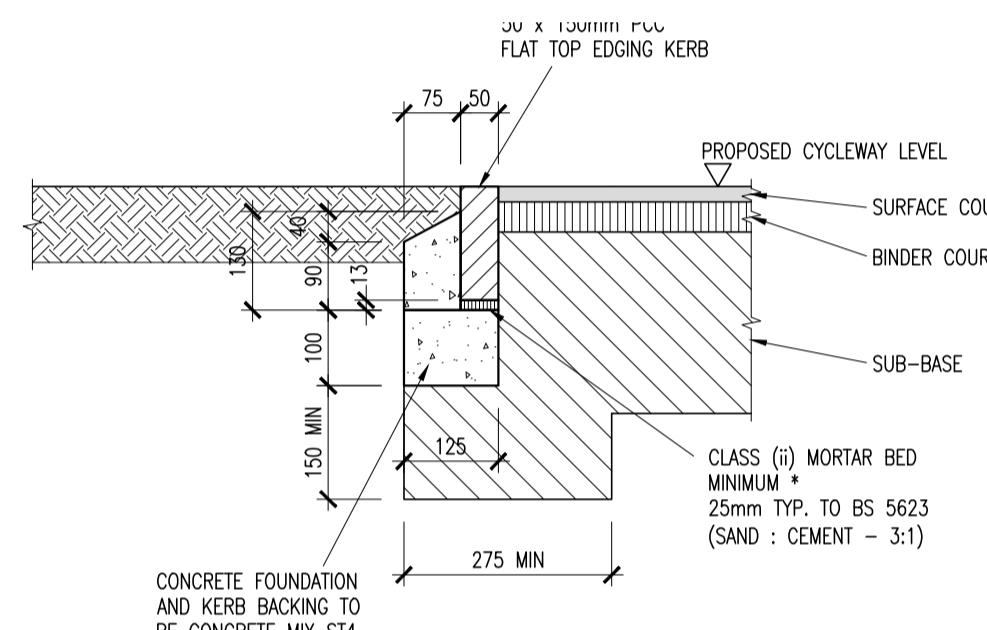
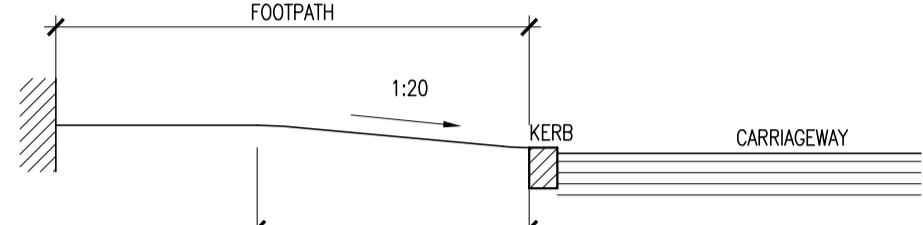
CONTROLLED DISHED CROSSING WITH TACTILE PAVING
SCALE 1:50



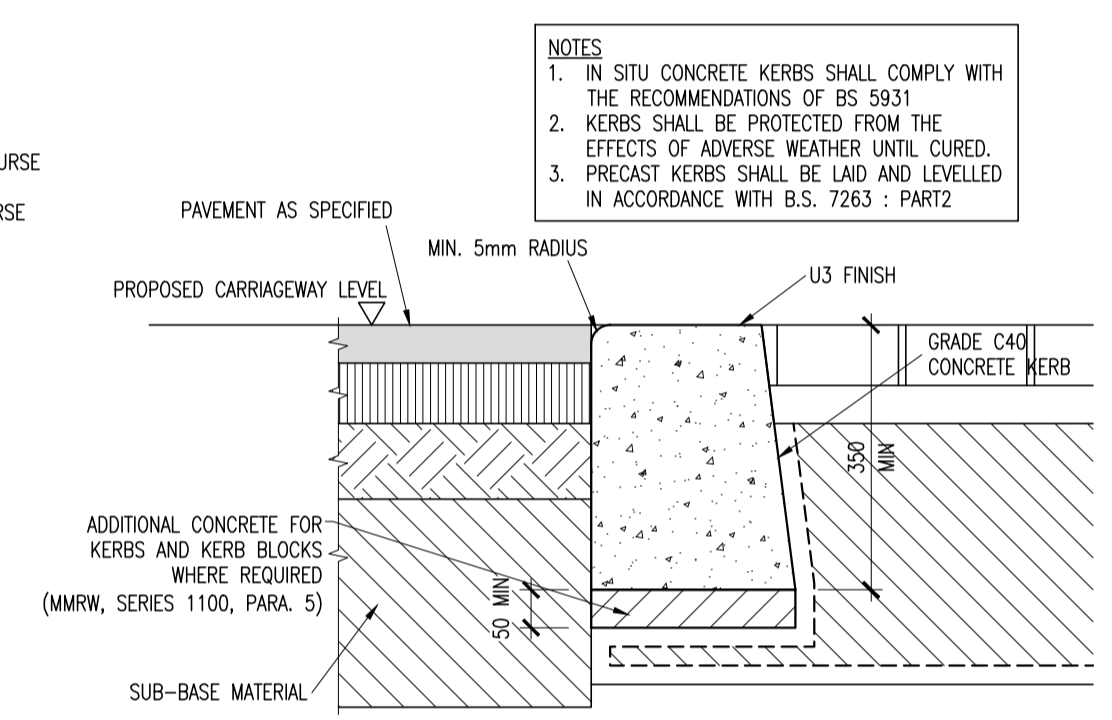
UNCONTROLLED DISHED CROSSING WITH TACTILE PAVING
SCALE 1:50



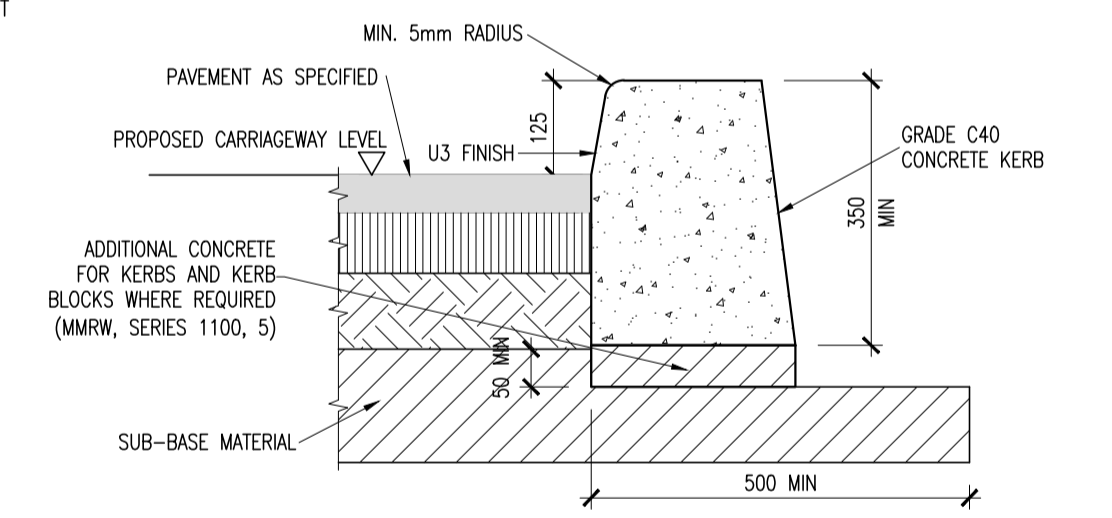
DISHED CROSSING WITH TACTILE PAVING
SCALE nts



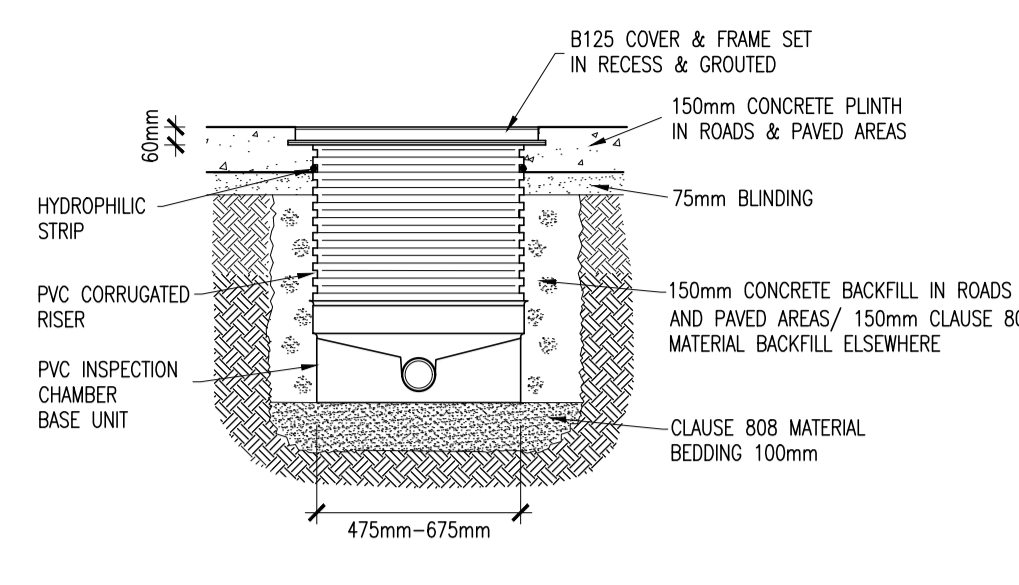
PIN KERB EDGING
SCALE 1:10



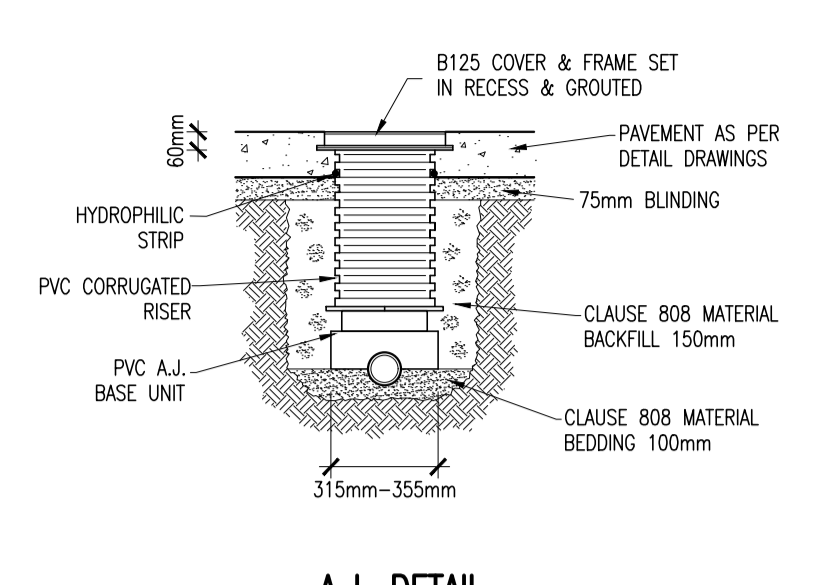
FLUSH KERB DETAIL
SCALE 1:10



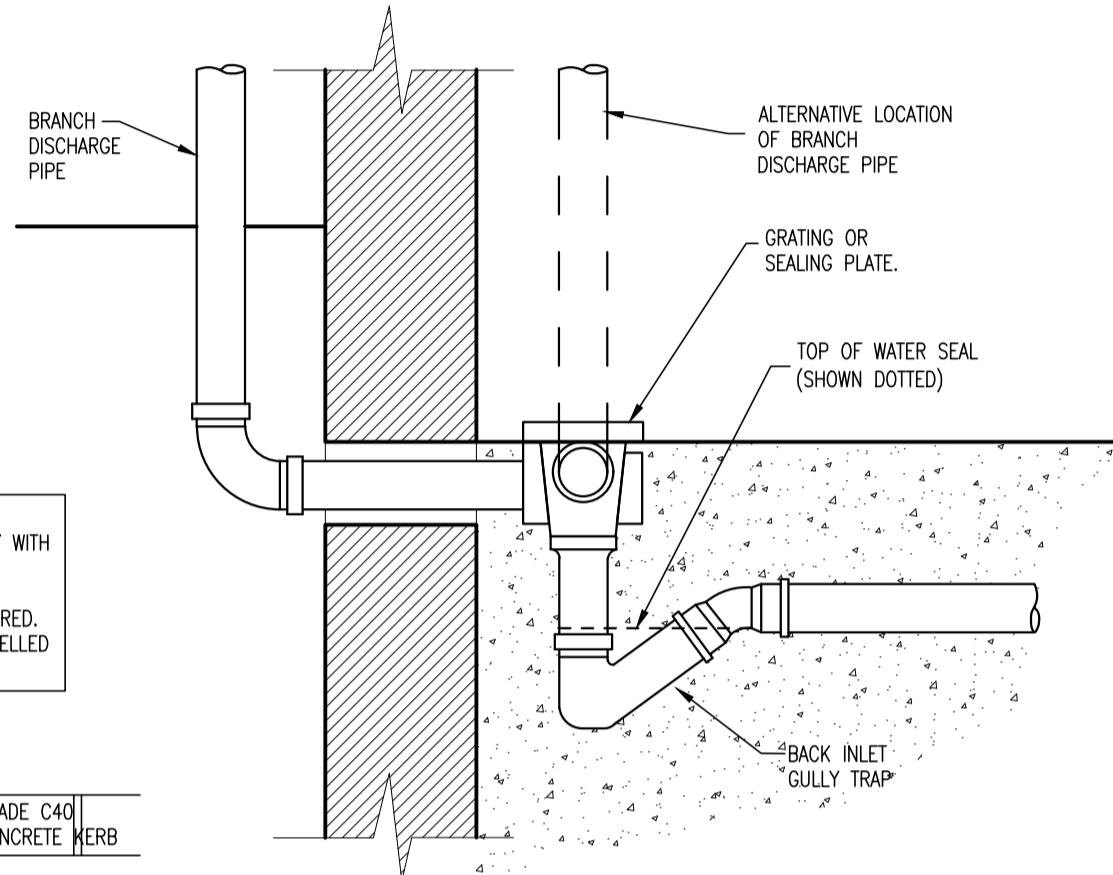
INSITU CONCRETE KERB DETAIL
SCALE 1:10



INSPECTION CHAMBER

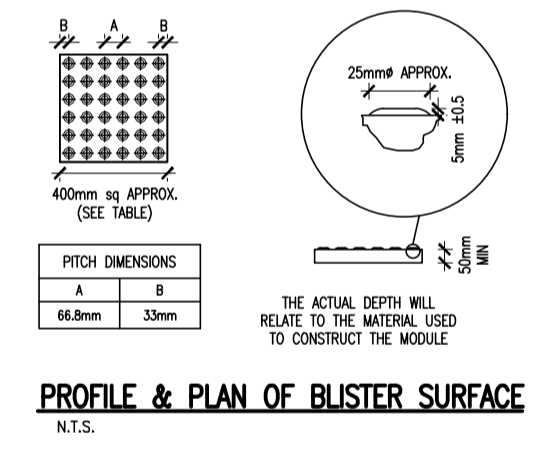


A.J. DETAIL

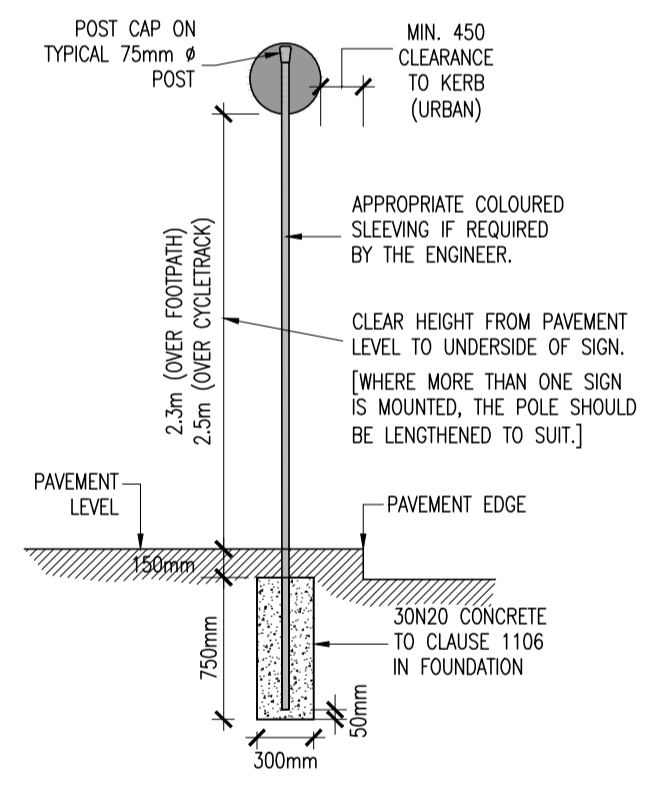


BACK INLET GULLY TRAP

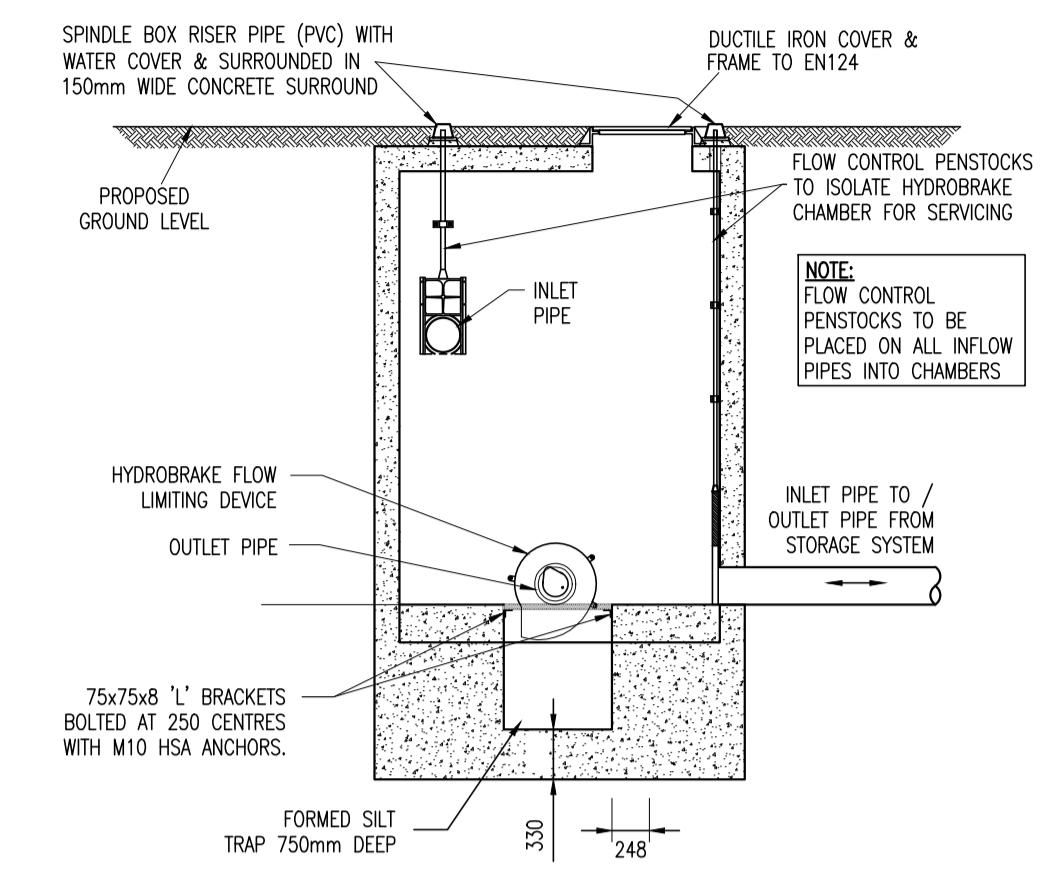
NOTES
1. IN SITU CONCRETE KERBS SHALL COMPLY WITH THE RECOMMENDATIONS OF BS 5931
2. KERBS SHALL BE PROTECTED FROM THE EFFECTS OF ADVERSE WEATHER UNTIL CURED.
3. PRECAST KERBS SHALL BE LAID AND LEVELLED IN ACCORDANCE WITH B.S. 7263 : PART 2



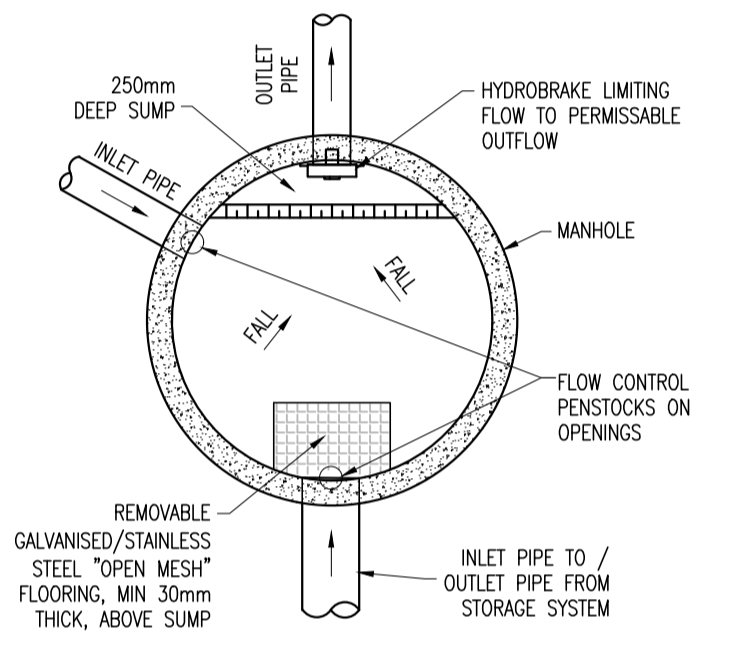
PROFILE & PLAN OF BUSTER SURFACE
N.T.S.



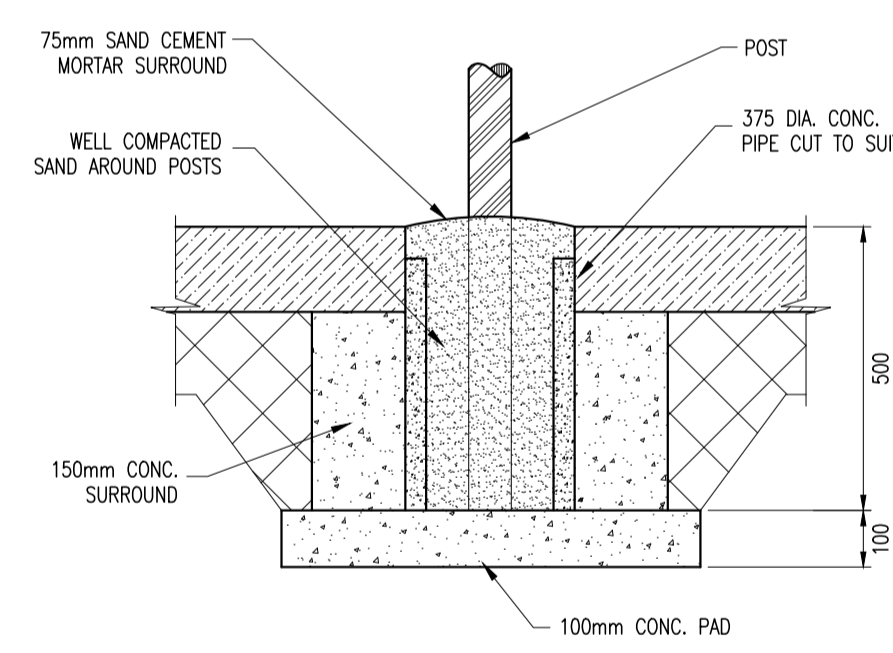
INFORMATION SIGN (SINGLE POST)



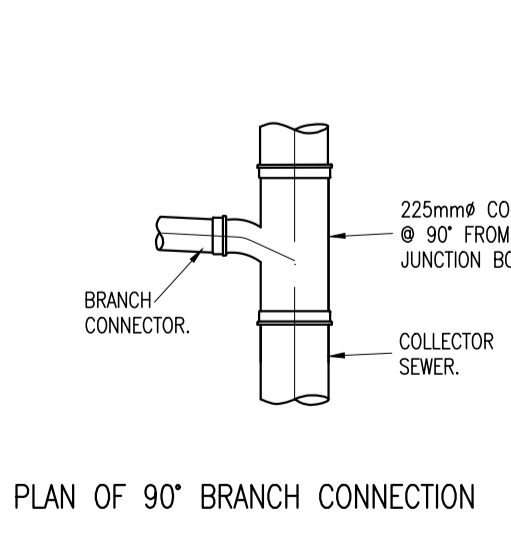
SECTION THROUGH HYDROBRAKE MANHOLE
SCALE 1:50



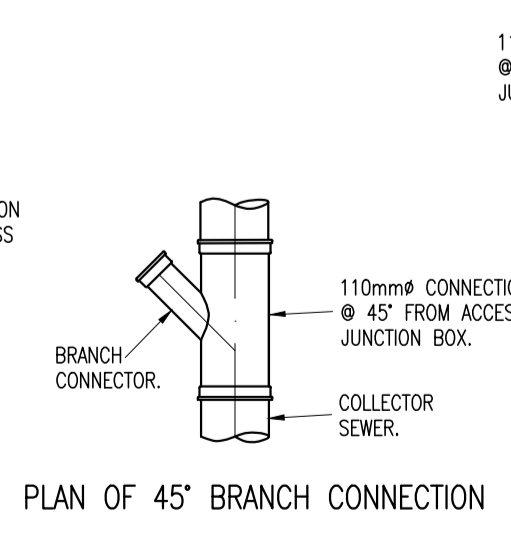
TYPICAL PLAN OF HYDROBRAKE MANHOLE
SCALE 1:50



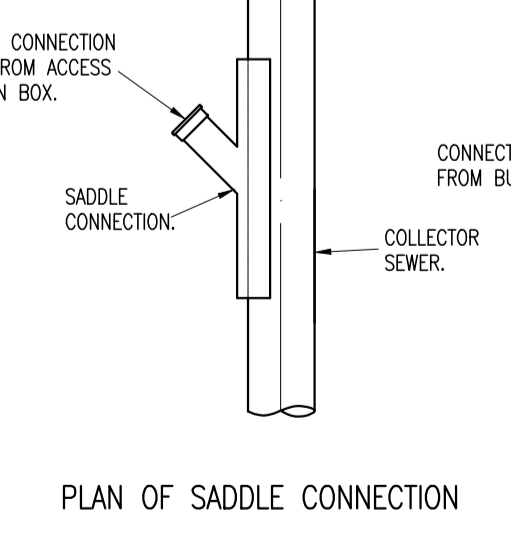
POST POCKET DETAIL
SCALE 1:50



PLAN OF 90° BRANCH CONNECTION

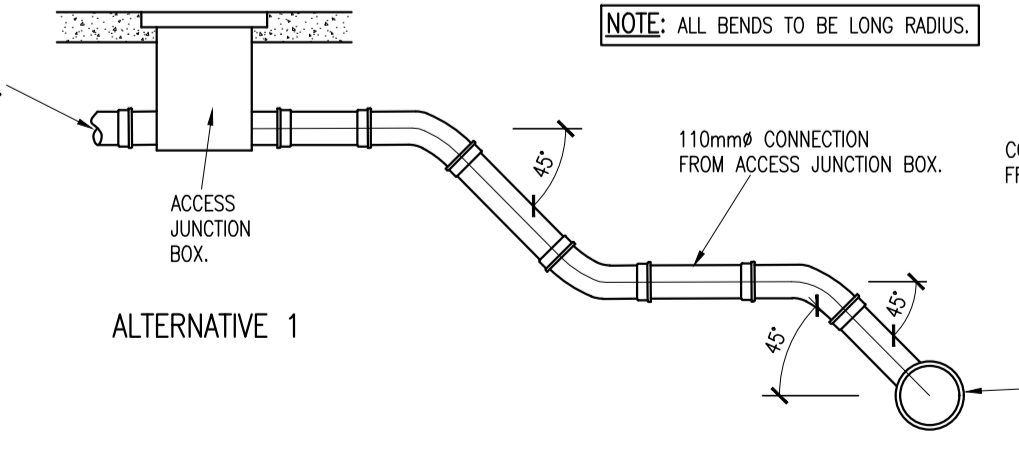


PLAN OF 45° BRANCH CONNECTION

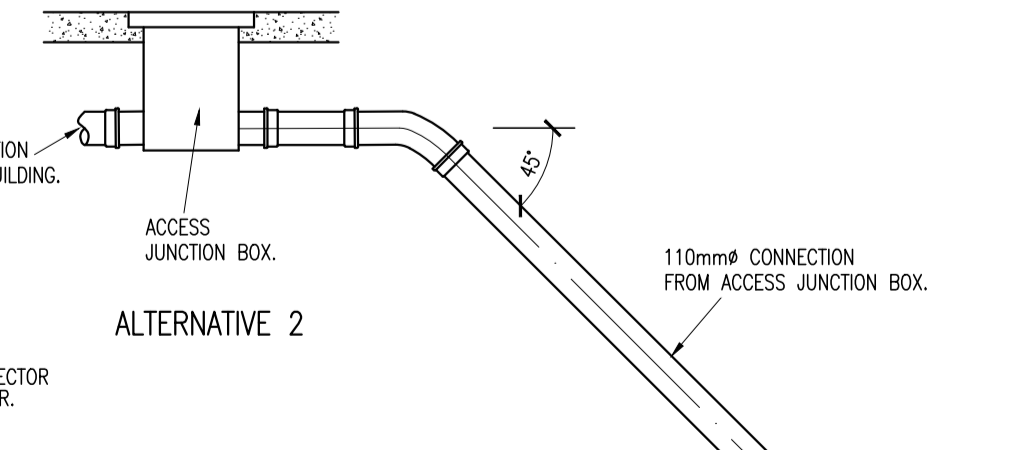


PLAN OF SADDLE CONNECTION

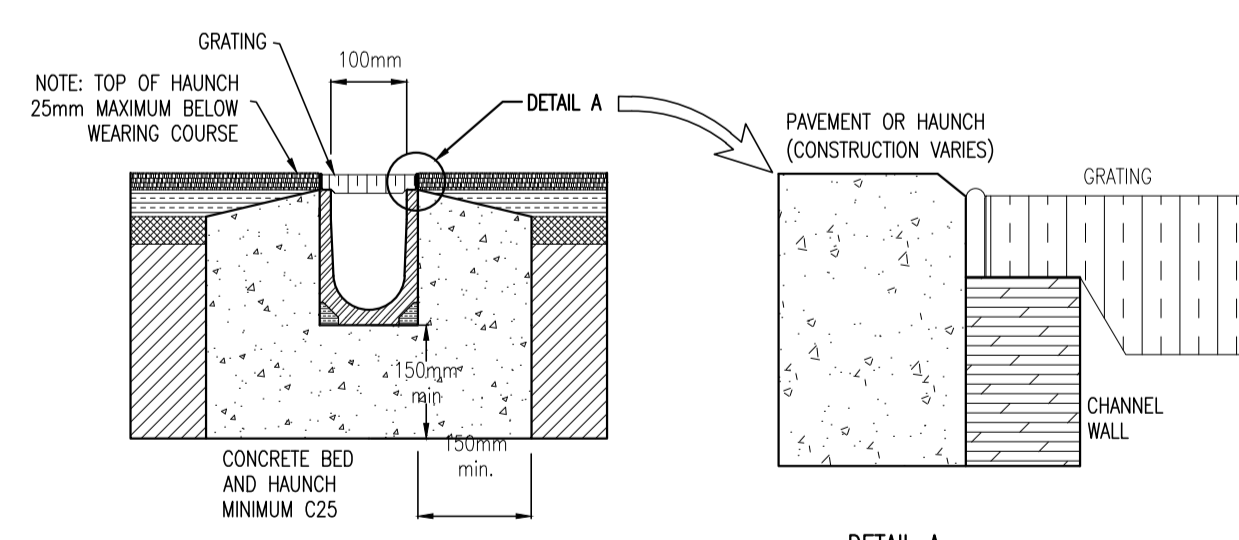
SADDLE CONNECTION FROM ACCESS JUNCTION (AJ) BOX TO COLLECTOR SEWER



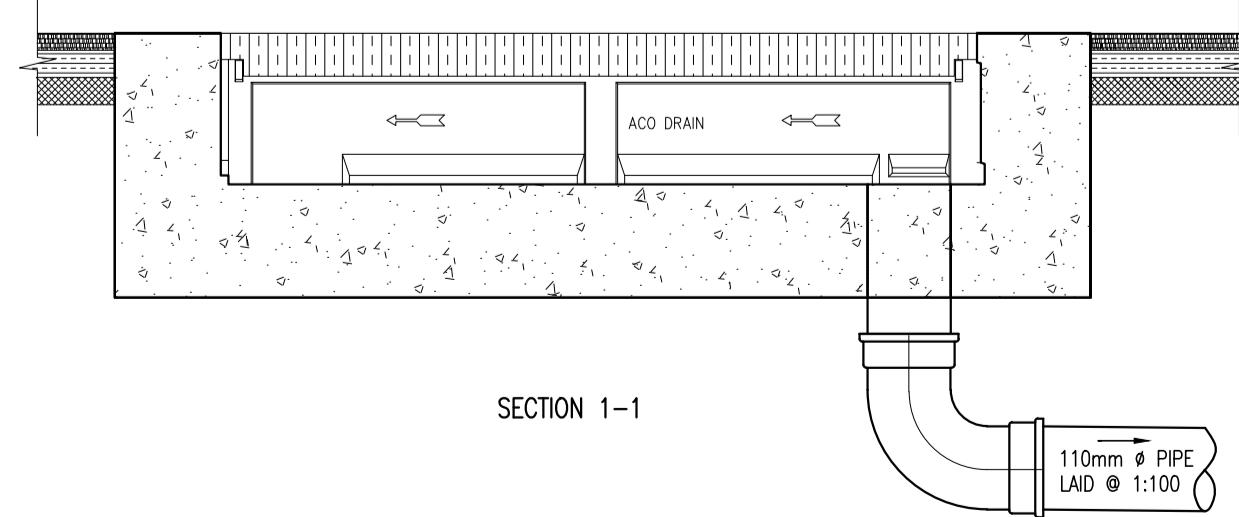
ALTERNATIVE 1



ALTERNATIVE 2



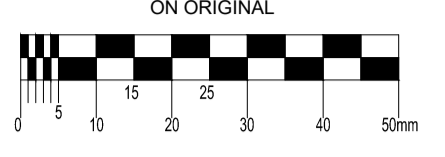
SECTION 2-2



SECTION 1-1

ACO CHANNELS
(SCALE 1:10)

© COPYRIGHT OF THIS DRAWING IS RESERVED BY DBFL CONSULTING ENGINEERS. NO PART SHALL BE REPRODUCED OR TRANSMITTED WITHOUT THEIR WRITTEN PERMISSION.
NO CHANGES OF WHATSOEVER NATURE ARE TO BE MADE TO ANY DETAILS SET OUT OR CONTAINED IN ANY DBFL SPECIFICATIONS OR DRAWINGS UNLESS THE EXPRESS CONSENT HAS BEEN OBTAINED IN ADVANCE IN WRITING FROM DBFL.



ON ORIGINAL

- NOTES:**
- C20/25 CONCRETE TO HAVE A MINIMUM CEMENT CONTENT OF 280kg/m³, MAXIMUM WATER/CEMENT RATIO OF 0.65 AND SLUMP CLASS S2.
 - C25/30 CONCRETE TO HAVE A MINIMUM CEMENT CONTENT OF 280kg/m³, MAXIMUM WATER/CEMENT RATIO OF 0.65 AND SLUMP CLASS S2.
 - C40/50 CONCRETE TO HAVE A MINIMUM CEMENT CONTENT OF 400kg/m³, MAXIMUM WATER/CEMENT RATIO OF 0.45 AND SLUMP CLASS S3.
 - WHERE CLASS 6F1/6F2 CAPPING MATERIAL IS PROPOSED WITHIN 500mm OF CONCRETE OR STEEL, CLASS 6N TO BE USED INSTEAD.
 - PLEASE REFER TO STRUCTURAL ENGINEERS DRAWINGS AND DETAILS FOR SPECIFICATIONS RELATING TO STRUCTURAL ELEMENTS

NOTE:
ALL WORKS & SPECIFICATIONS TO BE UNDERTAKEN IN ACCORDANCE WITH:
• TII SPECIFICATION FOR ROADWORKS
• GREATER DUBLIN CODE OF PRACTICE FOR DRAINAGE WORKS
• RECOMMENDATIONS FOR SITE DEVELOPMENT WORKS
• IRISH WATER CODE OF PRACTICE AND STANDARD DETAILS

P01	30-03-22	ISSUED FOR PLANNING	KGO	PM
rev	date	description	by	chkd.
		A - Approved		
		B - Approved with comments		
		C - Do not use		

suitability S2 - INFORMATION issue purpose PLANNING

DBFL Consulting Engineers
Civil, Structural & Transportation Engineering
www.dbfl.ie

DUBLIN OFFICE: Ormond House, Upper Ormond Quay, Dublin 7, D07 W704
PHONE: +353 1 404 4000
CORK OFFICE: 14 South Mall, Cork, T12 CT91
PHONE: +353 21 2024538
WATERFORD OFFICE: Suite 10 The Arkum, Maritime Gate, Canada Street, Waterford, X91 W028
PHONE: +353 51 309 500

project ref. **DE LA SALLE RESIDENTIAL DEVELOPMENT BALLYFERMOT, DUBLIN 10**

drawing title **STANDARD DETAILS SHEET 2 OF 5**

architect **DELPHI ARCHITECTS**

designed by	author	scale	sheet size
PM	KGO	AS SHOWN	A1
drawing no.			revision
180189-DBFL-XX-XX-DR-C-5003			P01